

2015 Palmyra Bowling - Dutchman



Oil Pattern Distance:	41 Feet	Reverse Brush Drop:	36 Feet	Oil Per Board:	45 uL
Forward Oil Total:	12.84 mL	Reverse Oil Total:	9.2 mL	Volume Oil Total:	22.04 mL
Forward Boards Crossed:	321 Boards	Reverse Boards Crossed:	230 Boards	Total Boards Crossed:	551 Boards

	Start	Stop	Loads	Mics	Speed	Crossed	Start	End	Feet	T.Oil
1	2L	2R	2	40	10	74	0.0	1.4	1.4	3330
2	9L	9R	2	40	14	46	1.4	5.3	3.9	2070
3	10L	10R	3	40	14	63	5.3	11.2	5.9	2835
4	11L	11R	3	40	14	57	11.2	17.1	5.9	2565
5	12L	12R	2	40	18	34	17.1	22.2	5.1	1530
6	13L	13R	2	40	18	30	22.2	27.3	5.1	1350
7	12L	12R	1	40	18	17	27.3	29.8	2.5	765
8	2L	2R	0	40	30	0	29.8	41.0	11.2	0

Conditioner:
Type In or Select
One

Forward



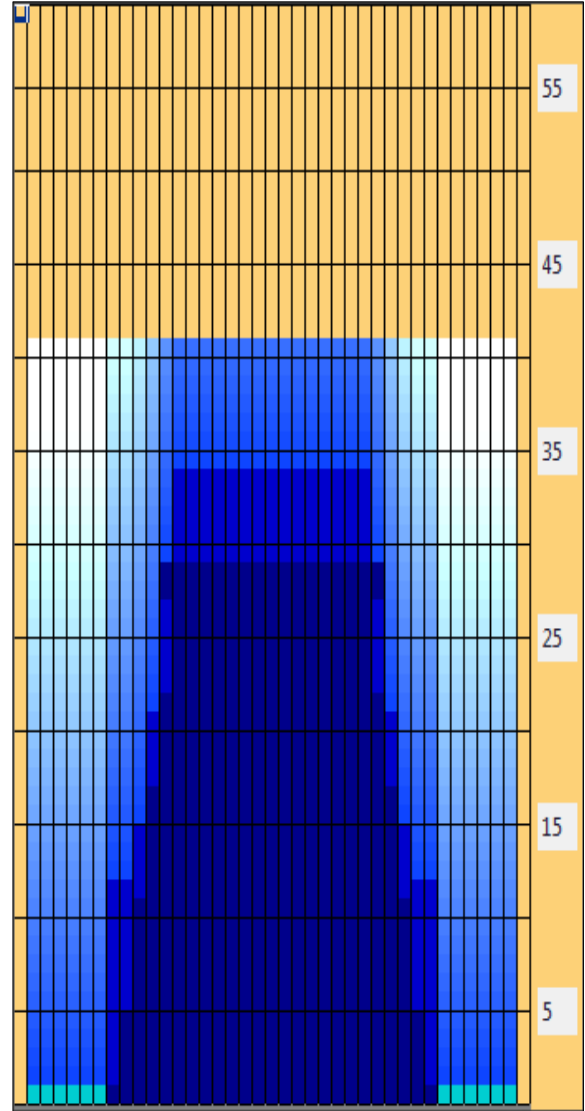
Reverse



Combined



Buff



	Start	Stop	Loads	Mics	Speed	Crossed	Start	End	Feet	T.Oil
1	2L	2R	0	40	30	0	41.0	34.0	-7.0	0
2	13L	13R	2	40	18	30	34.0	28.9	-5.1	1350
3	12L	12R	3	40	18	51	28.9	21.3	-7.6	2295
4	11L	11R	3	40	14	57	21.3	15.4	-5.9	2565
5	10L	10R	2	40	14	42	15.4	11.5	-3.9	1890
6	8L	8R	2	40	14	50	11.5	7.6	-3.9	2250
7	2L	2R	0	40	14	0	7.6	0.0	-7.6	0

Item	3L-7L:18L-18R	8L-12L:18L-18R	13L-17L:18L-18R	18L-18R:17R-13R	18L-18R:12R-8R	18L-18R:7R-3R
Description	Outside Track:Middle	Middle Track:Middle	Inside Track:Middle	Middle:Inside Track	Middle:Middle Track	Middle:Outside Track
Track Zone Ratio	13.5	2.21	1	1	2.21	13.5

