

# &\$% '8 i hW a Ub'DUHyfb'!G]b[ 'Yg'#8 ci V'Yg'



## Palmyra Bowling

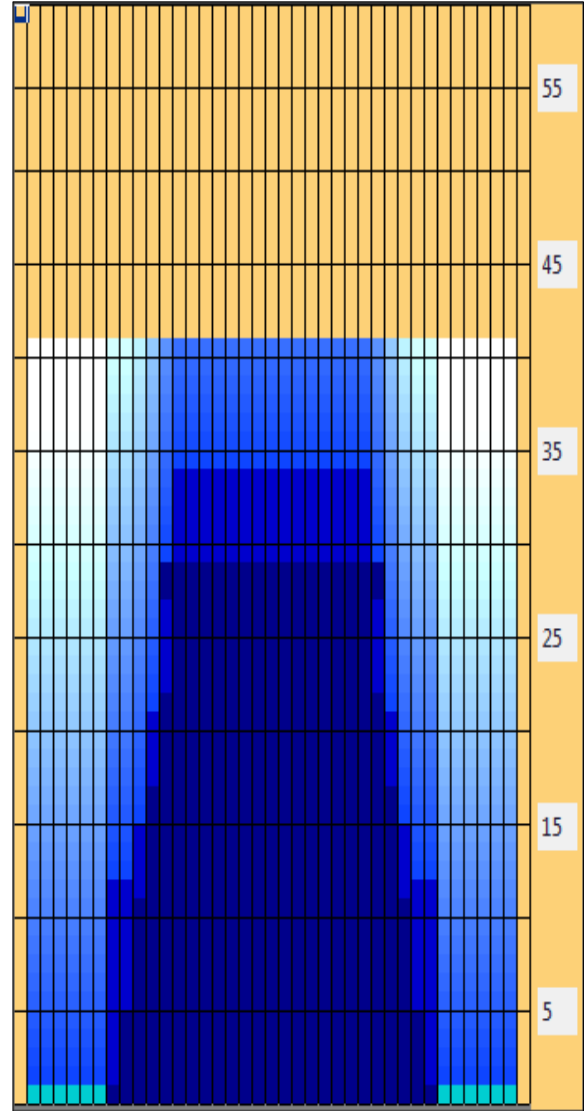
<b>Oil Pattern Distance:</b>	<b>41 Feet</b>	<b>Reverse Brush Drop:</b>	<b>36 Feet</b>	<b>Oil Per Board:</b>	<b>45 uL</b>
<b>Forward Oil Total:</b>	<b>12.84 mL</b>	<b>Reverse Oil Total:</b>	<b>9.2 mL</b>	<b>Volume Oil Total:</b>	<b>22.04 mL</b>
<b>Forward Boards Crossed:</b>	<b>321 Boards</b>	<b>Reverse Boards Crossed:</b>	<b>230 Boards</b>	<b>Total Boards Crossed:</b>	<b>551 Boards</b>

	Start	Stop	Loads	Mics	Speed	Crossed	Start	End	Feet	T.Oil
1	2L	2R	2	40	10	74	0.0	1.4	1.4	3330
2	9L	9R	2	40	14	46	1.4	5.3	3.9	2070
3	10L	10R	3	40	14	63	5.3	11.2	5.9	2835
4	11L	11R	3	40	14	57	11.2	17.1	5.9	2565
5	12L	12R	2	40	18	34	17.1	22.2	5.1	1530
6	13L	13R	2	40	18	30	22.2	27.3	5.1	1350
7	12L	12R	1	40	18	17	27.3	29.8	2.5	765
8	2L	2R	0	40	30	0	29.8	41.0	11.2	0

Navigation: Forward Reverse More

Conditioner:  
Type In or Select One

- Forward
- Reverse
- Combined
- Buff



	Start	Stop	Loads	Mics	Speed	Crossed	Start	End	Feet	T.Oil
1	2L	2R	0	40	30	0	41.0	34.0	-7.0	0
2	13L	13R	2	40	18	30	34.0	28.9	-5.1	1350
3	12L	12R	3	40	18	51	28.9	21.3	-7.6	2295
4	11L	11R	3	40	14	57	21.3	15.4	-5.9	2565
5	10L	10R	2	40	14	42	15.4	11.5	-3.9	1890
6	8L	8R	2	40	14	50	11.5	7.6	-3.9	2250
7	2L	2R	0	40	14	0	7.6	0.0	-7.6	0

Navigation: Forward Reverse More

Item	3L-7L:18L-18R	8L-12L:18L-18R	13L-17L:18L-18R	18L-18R:17R-13R	18L-18R:12R-8R	18L-18R:7R-3R
Description	Outside Track:Middle	Middle Track:Middle	Inside Track:Middle	Middle:Inside Track	Middle:Middle Track	Middle:Outside Track
Track Zone Ratio	13.5	2.21	1	1	2.21	13.5

